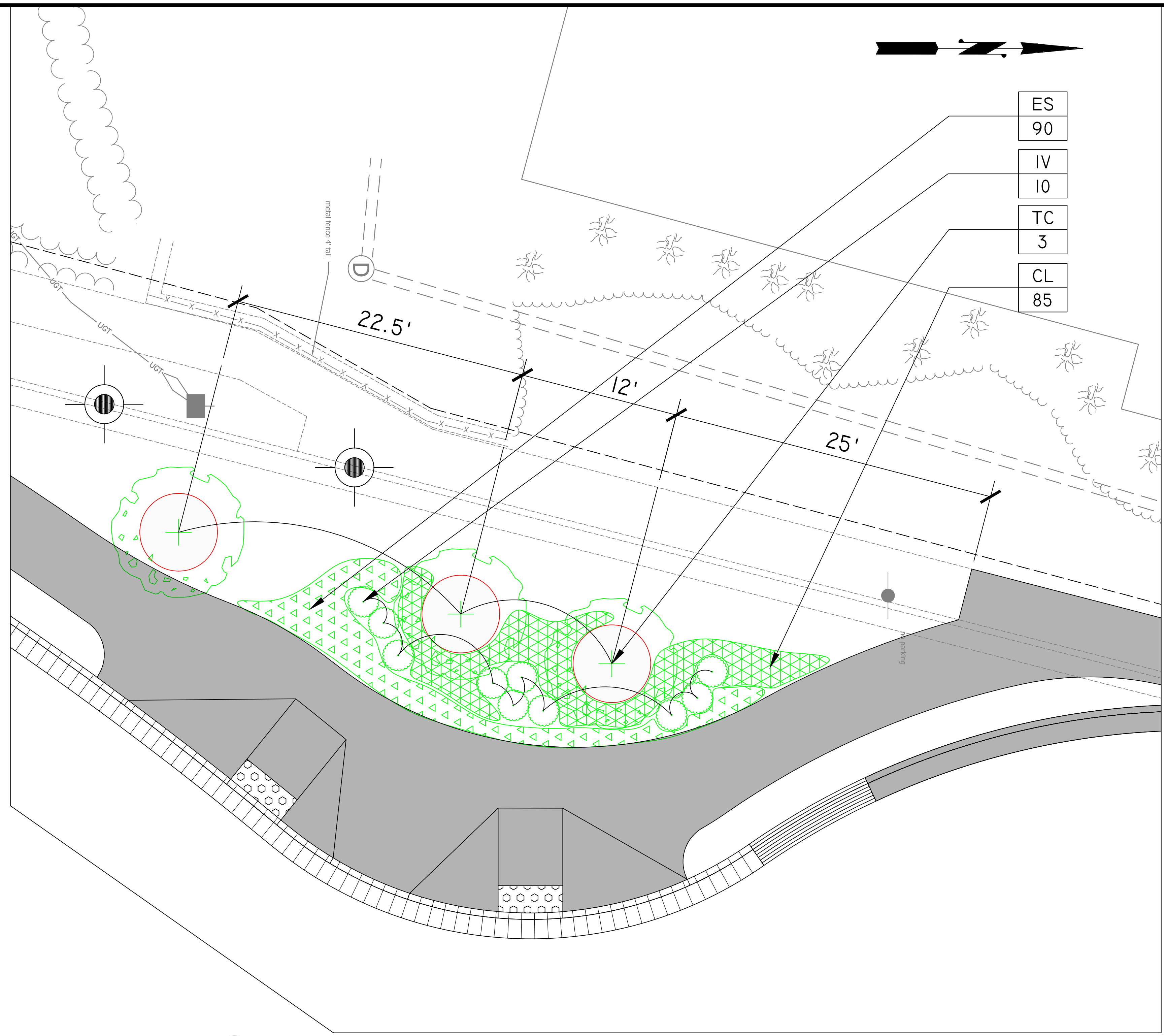


REVISED ON 1/24/2022

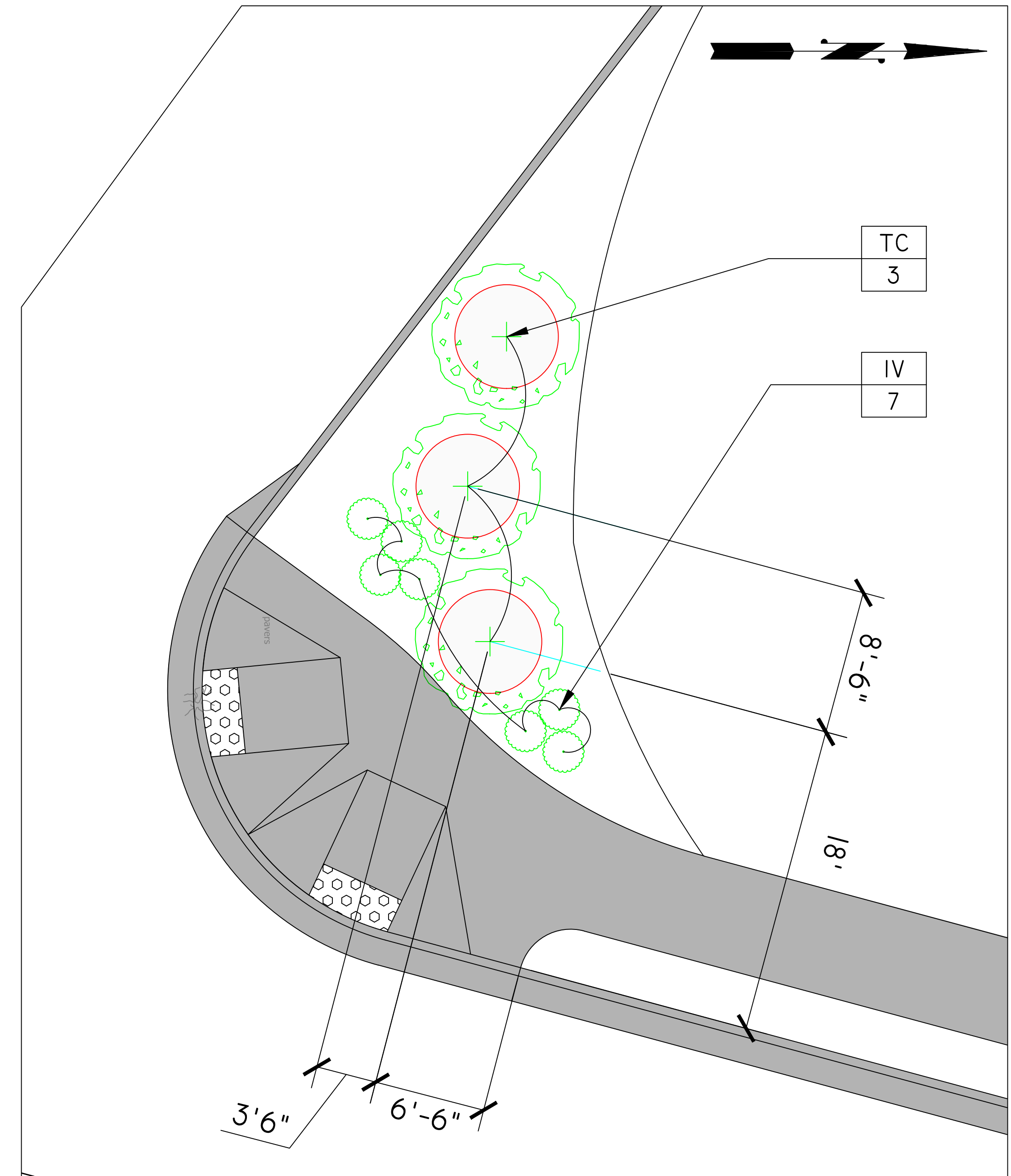
FILENAME: DC12-LANDSCAPE_EXHIBIT.DWG PATH: Q:\DATA\DC12\DESIGN\ACTIVE PLOTTED BY: LDELACRUZ



 S ARLINGTON RIDGE RD & S LYNN ST

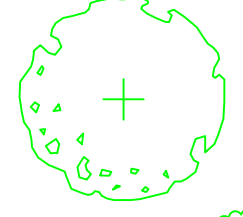
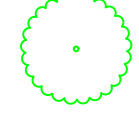
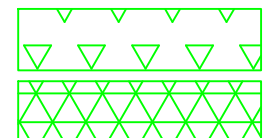
PLANTING SCHEDULE

KEY	QTY.	LATIN NAME	COMMON NAME	SIZE	SPACING	NOTE
TREE						
TC	6	<i>Tilia cordata</i>	Little-leaf Linden	2" Cal.	As shown	B&B, SINGLE STEM, SPECIMEN
SHRUB						
IV	17	<i>Itea virginica 'Sprich'</i> LITTLE HENRY	Virginia sweetspire	18"-24"	2'-6" O.C.	See Plan
GRASS						
ES	90	<i>Eragrostis spectabilis</i>	Purple Lovegrass	#1 Cont.	15"-18" O.C.	See Plan
CL	85	<i>Chasmanthium latifolium</i>	Indian woodoats	#1 Cont.	15"-18" O.C.	See Plan



 S ARLINGTON RIDGE RD AT 1395 RAMP

LEGEND:

-  PROPOSED TREE
-  PROPOSED SHRUB
-  PROPOSED GRASSES

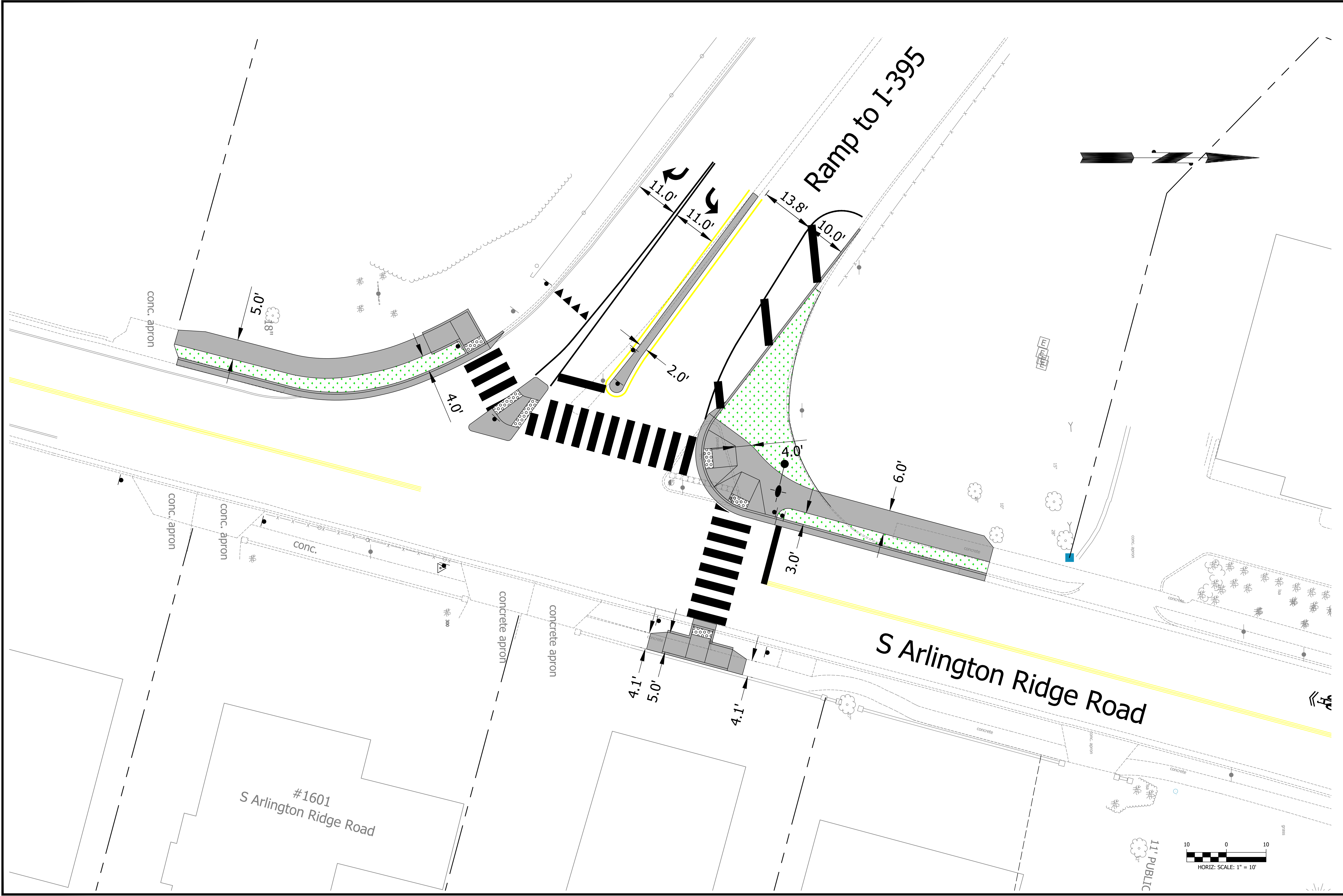
SEAL

APPROVALS	DATE
QUALITY CONTROL ENGINEER	
CONSTRUCTION MANAGEMENT SUPERVISOR	
WATER, SEWER, STREETS BUREAU CHIEF	
TRANSPORTATION DIRECTOR	
PROJECT MANAGER	

REVISIONS	DATE

S ARLINGTON RIDGE RD INTERSECTION IMPROVEMENT DC12
 INTERSECTION OF S ARLINGTON RIDGE RD AND S LYNN ST, AND RAMP 1-395
 LANDSCAPE PLAN

DESIGNED:
 DRAWN:
 CHECKED:
 PLOTTED: JANUARY 18 2023
 SCALE:
 N/A
 C091.1



Ramp to I-395

S Arlington Ridge Road

conc. apron

conc. apron

conc. apron

conc.

concrete apron

concrete apron

11' PUBLIC

HORIZ: SCALE: 1" = 10'

#1601
S Arlington Ridge Road

4.1'

5.0'

4.1'

4.0'

5.0'

11.8'

11.0'

11.0'

13.8'

10.0'

2.0'

3.0'

6.0'

4.0'

conc. apron

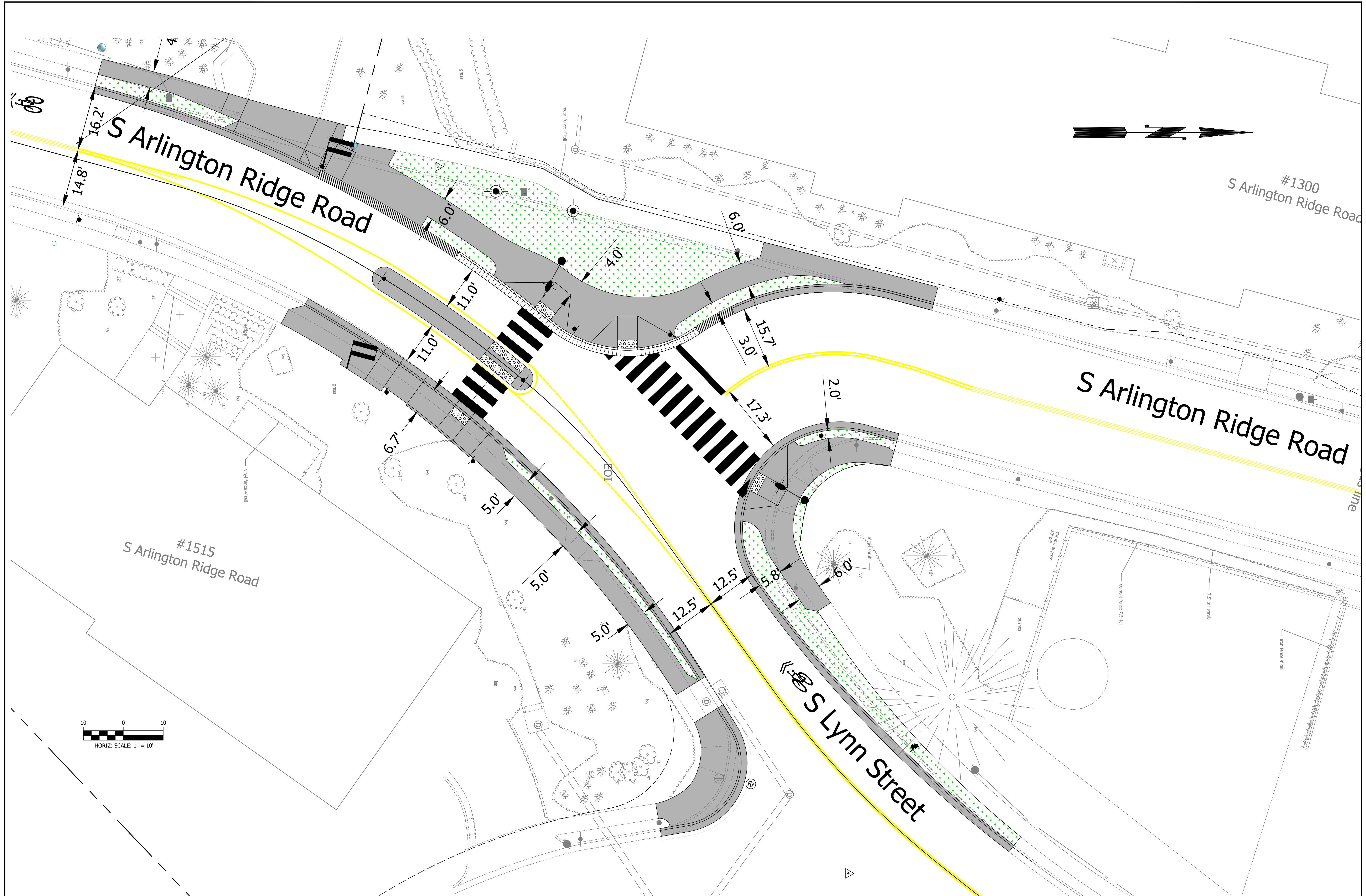
concrete

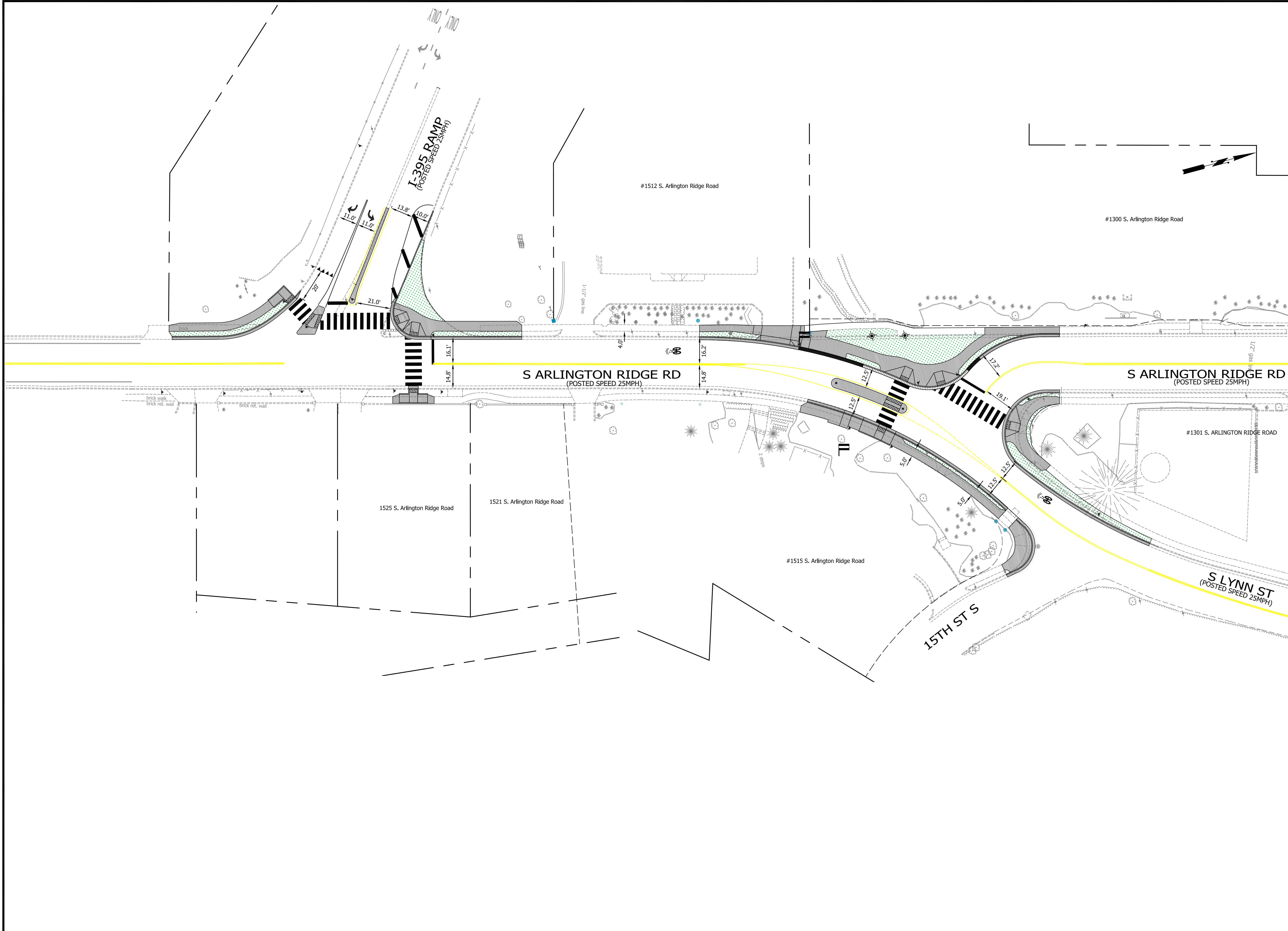
concrete

concrete

concrete

grass





ARLINGTON VIRGINIA
 DEPARTMENT OF ENVIRONMENTAL SERVICES
 FACILITIES & ENGINEERING DIVISION
 ENGINEERING BUREAU
 2100 CLARENDON BOULEVARD, SUITE 813
 ARLINGTON, VA 22201
 PHONE: 703.228.3629
 FAX: 703.228.3606
 COPYRIGHT © 2022 ARLINGTON COUNTY VIRGINIA - ALL RIGHTS RESERVED

SEAL

APPROVALS	DATE
QUALITY CONTROL ENGINEER	
CONSTRUCTION MANAGEMENT SUPERVISOR	
WATER, SEWER, STREETS BUREAU CHIEF	
TRANSPORTATION DIRECTOR	
PROJECT MANAGER	

REVISIONS	DATE

S ARLINGTON RIDGE RD INTERSECTION IMPROVEMENTS
 DC12
 Intersection Of S Arlington Ridge Rd And S Lynn St, And Ramp I-395
SIGNING AND MARKING PLAN

DESIGNED: LED
 DRAWN: LED
 CHECKED: JL

PLOTTED: JANUARY 18 2023

SCALE:

 HORIZ. SCALE